



Tosoh Automated Glycohemoglobin Analyzer

HLC-723GX



Precision



Speed

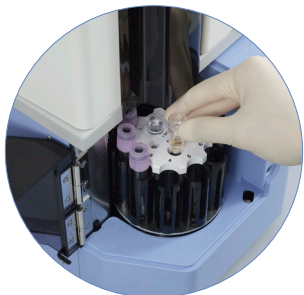


Operational Simplicity

- Gold Standard HPLC technology
- HbA1c result with variant detection
- Less than 1 % CV
- NGSP and IFCC certified

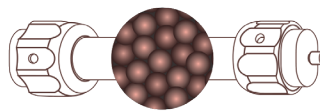


HPLC Column

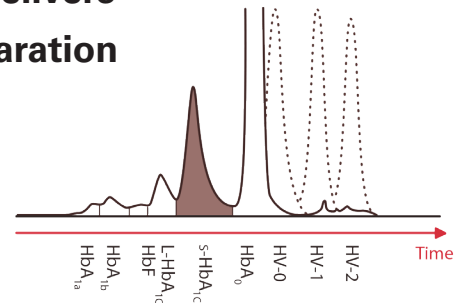


Sample Loader

Patented Column Delivers Superior HPLC Separation



Flow



Tosoh's HPLC column is superior in providing a comprehensive analysis of the patient's hemoglobin profile. The method utilizes a resin-packed column where hemoglobin fractions bind to the resin based on their charge. Buffers with specific ionic strengths are passed through the column allowing for the separation of hemoglobin fractions.

Not FDA Cleared. Available for sale only outside U.S.

TOSOH BIOSCIENCE

HbA1c testing plays an important role in diabetes monitoring and diagnosis. With the increase in the number of diabetics, the need for HbA1c testing in laboratories has become even more significant. High Performance Liquid Chromatography (HPLC) is considered the gold standard for A1c testing, providing accurate and reliable results. Tosoh HPLC analyzers have contributed in a pivotal way in establishing HbA1c as a diabetes marker through their participation in the landmark DCCT and UKPDS trials. With over 40 years of experience in HPLC, Tosoh offers a reliable and trusted method for HbA1c measurement.

HLC-723GX Key Benefits:

Precision

- **Direct Determination of Stable HbA1c:** Provides a coefficient of variation (CV) of less than 1%, ensuring highly precise measurements.

Speed

- **Rapid Results:** Delivers stable HbA1c results with variant detection in just 2.2 minutes.
- **High Throughput:** Capable of processing up to 10 samples in 26.4 minutes.

Operational Simplicity

- **Automated Features:** Includes cap piercing, positive sample identification, and automated maintenance to streamline operations.
- **Workflow Efficiency:** Designed for a streamlined workflow with minimal manual intervention.
- **Automated Maintenance:** Minimizes downtime with automated daily maintenance routines.

User friendly

- **Touch Screen Interface:** Enables easy instrument operation.
- **Buffer Monitoring:** Allows constant visual monitoring of buffer consumption with customizable sophisticated flag rules.
- **Data Management Integration:** Optional integration with data management middleware for enhanced data handling.
- **Easy Maintenance:** Features simple finger-tight connectors for quick and convenient replacement of columns and pre-filters.

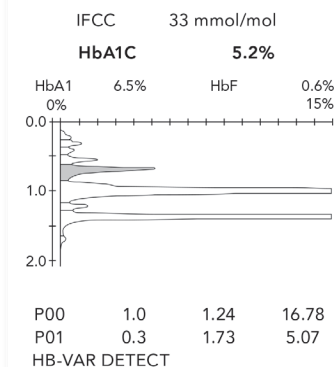
Compact

- Dimensions (W x D x H) 14.6 x 20.7" x 18.9", Weight 55.1 lbs



Tosoh Bioscience, Inc.
3600 Gantz Road
Grove City, OH 43123
Tel: (800) 248-6764
Fax: (650) 615-0415
www.tosohbioscience.us

NAME	%	TIME	AREA
FP	0.0	0.00	0.00
A1A	0.5	0.23	8.06
A1B	0.8	0.32	13.74
F	0.6	0.42	10.08
LA1C+	1.5	0.56	24.47
SA1C	5.2	0.69	69.46
A0	91.1	1.02	1505.38
H-V1	15.5	1.40	303.12
TOTAL AREA			1956.15



HbA1c results are unaffected in the presence of the most common hemoglobin variants, HbF, or hemoglobin derivatives such as labile and carbamylated hemoglobin.

Ordering Information

0023130	HLC-723 GX
0023160	TSKgel® GX
0023510	GX Elution Buffer No. 1 (S)
0023511	GX Elution Buffer No. 2 (S)
0023512	GX Elution Buffer No. 3 (S)
018431US	HSi Hemolysis & Wash Solution (L)
0018767	HbA1c Calibrator Set
220232	HbA1c Control Set

Not FDA Cleared. Available for sale only outside U.S.